



GMT MONTHLY MEMBERSHIP PROGRESS REPORT

Results as of: 1/31/2020

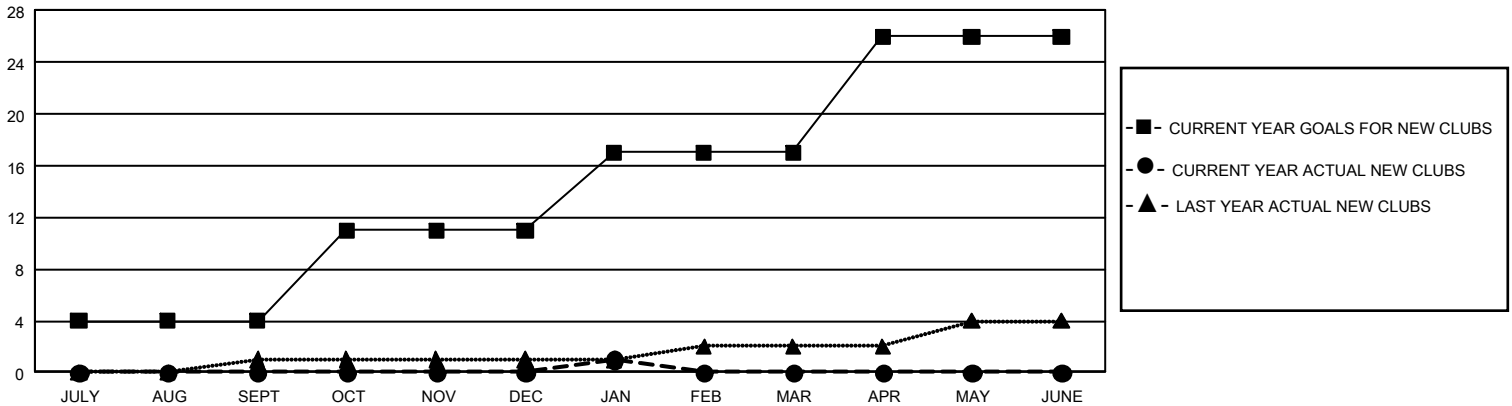
GMT Constitutional Area 1, Group N

GMT: OPEN

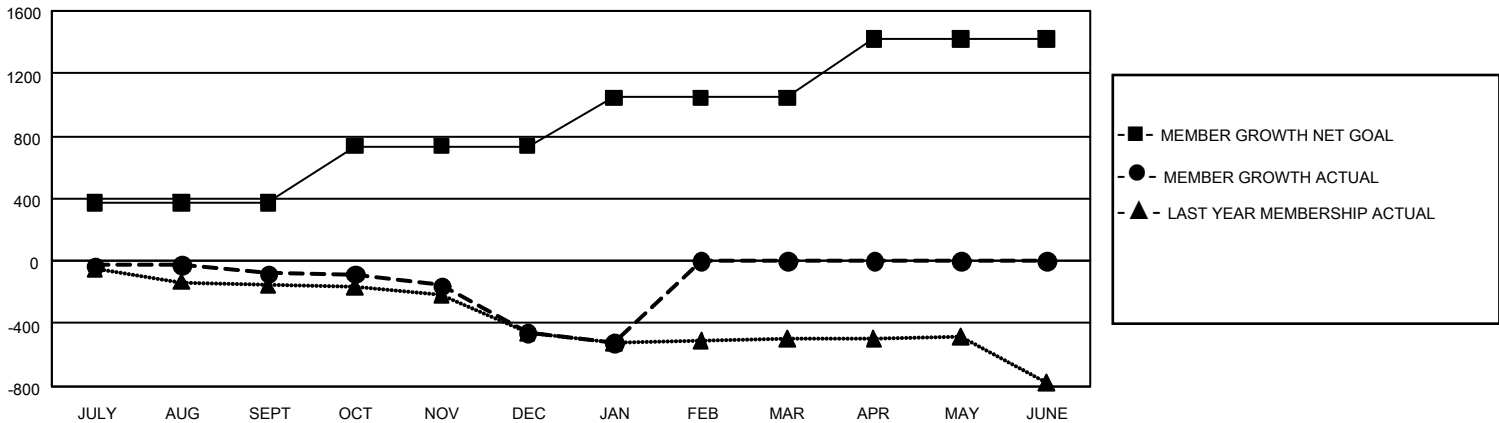
REPORT DOES NOT INCLUDE CLUBS IN UNDISTRICTED AREAS.

Clubs				Members			
RESULTS FOR 2019-2020				RESULTS FOR 2019-2020			
QUARTER	NEW CLUB GOAL	NEW CLUBS	DROPPED CLUBS	QUARTER	MEMBER GROWTH NET GOAL	MEMBER GROWTH ACTUAL	DROPPED MEMBERS ACTUAL (including transfers)
JULY/AUG/SEPT	12	0	1	JULY/AUG/SEPT	1,113	370	407
OCT/NOV/DEC	21	0	13	OCT/NOV/DEC	1,095	225	568
JAN/FEB/MAR	18	1	1	JAN/FEB/MAR	933	154	194
APR/MAY/JUNE	27	0	0	APR/MAY/JUNE	1,122	0	0

GOALS AND ACTUAL NEW CLUBS CUMULATIVE



GOALS AND ACTUAL MEMBERS CUMULATIVE



DROPPED CLUBS: 15	251 CLUBS OF 597 ADDED 1 OR MORE NEW MEMBERS	GENDER DISTRIBUTION	
		MALE 9,022 (67.01%)	FEMALE 4,442 (32.99%)
DROPPED MEMBERS		CLICK HERE FOR CUMULATIVE MEMBERSHIP DATA	TOTAL FAMILY UNIT MEMBERS 2,604
DECEASED 119	CLUB CANCELLED 114		FAMILY MEMBERS PAYING HALF DUES 1,331
OTHER 936	TOTAL 1,169		